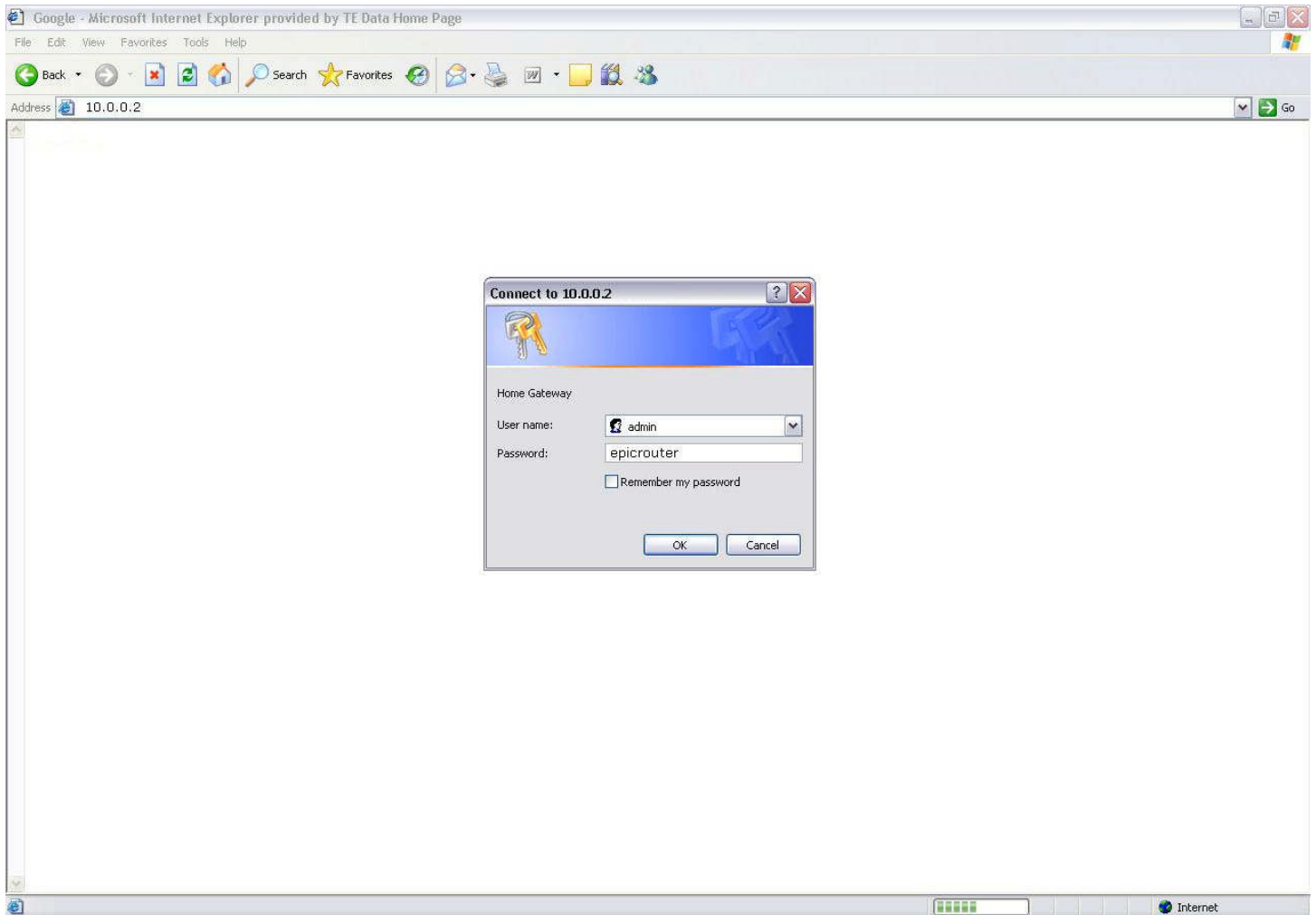


## How to setup Conexant Router [Dynamic Configuration]



- Login into the router with **10.0.0.2**
- The default Username : **admin**
- The default password is : **epicrouter**

Conexant - Hasbani - Microsoft Internet Explorer provided by TE Data Home Page

10.0.0.2

Conexant - Hasbani

**CONEXANT**

**Status**  
[Home](#)  
[PPP](#)  
[ADSL](#)

**Configuration**  
[WAN](#) ←  
[LAN](#)  
[PPP](#)  
[NAT](#)  
[Virtual Server](#)  
[Bridge Filtering](#)  
[DNS](#)  
[User Level Username/Password](#)  
[Save Settings / Reboot](#)

**Admin Privilege**  
[WAN Status](#)  
[ATM Status](#)  
[ADSL Configuration](#)  
[Route Table](#)  
[Learned MAC Table](#)  
[RIP Configuration](#)  
[SNMP Configuration](#)  
[Misc Configuration](#)  
[TCP Status](#)  
[Admin Level](#)  
[Username/Password](#)  
[Reset to Factory Default](#)  
[Diagnostic Test](#)  
[System Log](#)

[Firewall](#)

Select Adapter:  
Adapter: Pvc 0  
Submit

Done Internet 100%

- Click **WAN** and then select **Adapter: Pvc 0**
- And Click **Submit**.

Conexant - Hasbani - Microsoft Internet Explorer provided by TE Data Home Page

10.0.0.2

Conexant - Hasbani

### WAN Configuration (Pvc 0)

Change Adapter

Virtual Circuit	Enabled	Static IP Settings	IP Address	
Bridge	Disabled	Static IP Settings	Subnet Mask	
IGMP	Disabled	Static IP Settings	Gateway	
Encapsulation	PPPoE LLC	Static IP Settings		
<b>ATM</b>		Static IP Settings		
VPI	0	Static IP Settings		
VCI	35	Static IP Settings		
Service Category	UBR	Static IP Settings		
Peak Cell Rate	0 kbps	Static IP Settings		
Sustainable Cell Rate	0 kbps	Static IP Settings		
Max Burst Size	0	Static IP Settings		
<b>DHCP Client</b>		Static IP Settings		
DHCP Client	Enabled	Static IP Settings		
Host Name		Static IP Settings		
<b>MAC Spoofing</b>		Static IP Settings		
MAC Spoofing	Disabled	Static IP Settings		
Mac Address	00:00:00:00:00:00	Static IP Settings		

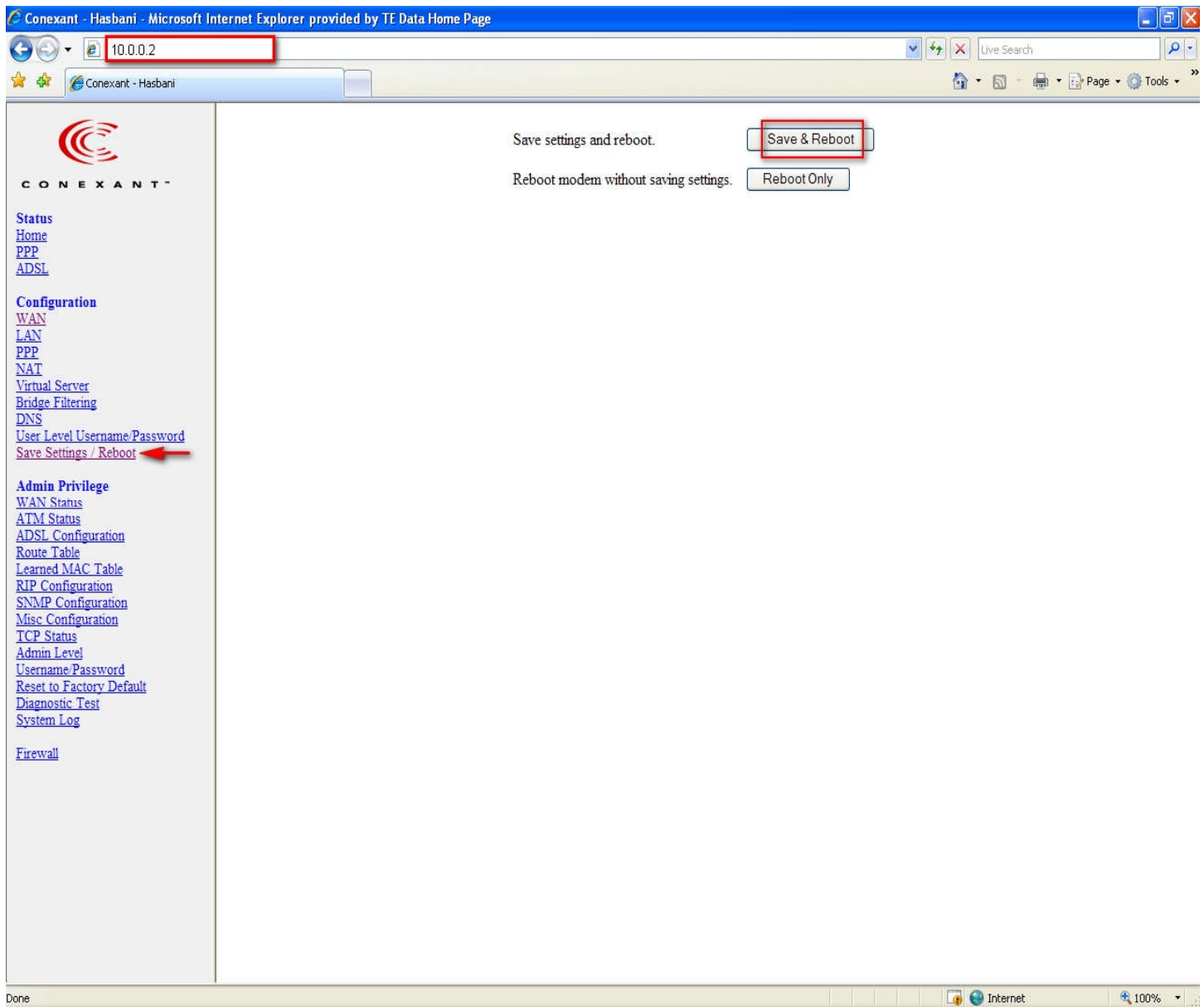
<b>Static IP Settings</b>	
IP Address	
Subnet Mask	
Gateway	
<b>PPP</b>	
Service Name	
Username	username@tedata.net.eg
Password	*****
Disconnect Timeout	0 minutes (Max:32767)
MRU	1492
MTU	1492
MSS	1432
Lcp Echo Interval	10 seconds
Lcp Echo Maximum Consecutive Failure	6
Authentication	Auto
Automatic Reconnect	<input type="checkbox"/>

Submit Reset

Settings need to be saved to Flash and the system needs to be rebooted for changes to take effect.

[Save Configuration](#)

- Choose **Encapsulation: PPPoE LLC**
- And **VPI: 0** and **VCI: 35**
- Enter your **username** and **Password**
- And select on **Automatic Reconnect**
- And Click **Submit**.



- And then choose **save setting/Reboot** and then click **Save &Reboot** button to finish the configuration.



::: Copyright © 2007 . TE Data Support Team . All Rights Reserved :::

::: For Further Informations Call Us At 19777 :::

